



O U R J O B I S L I F E S E C U R I T Y



# MEDAR TD<sup>®</sup>

## Traffic Statistics System

- ✓ LIDAR Technology
- ✓ Traffic Density Measuring & Comprehensive Reporting
- ✓ Multiple Vehicle Tracking
- ✓ High Speed Accuracy
- ✓ Vehicle Classification
- ✓ Multiple Lane Detection
- ✓ Instant Data Transfer
- ✓ Mobile & Compact System

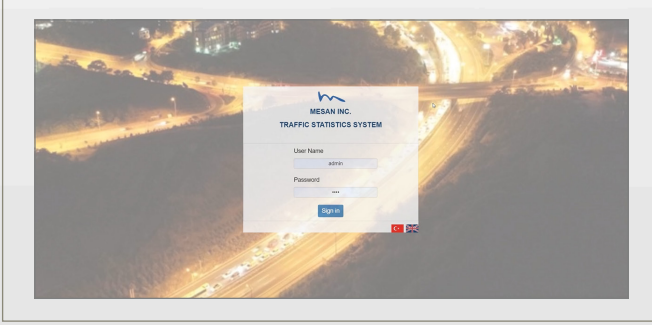


MEDAR TD is a lidar based traffic statistics system. It is fully portable and can work without needing any infrastructure. The unit can be mounted road side pole and detect passing by vehicles' speed, lane, class as well the count. Medar TD creates variety of user friendly reports for analysis.

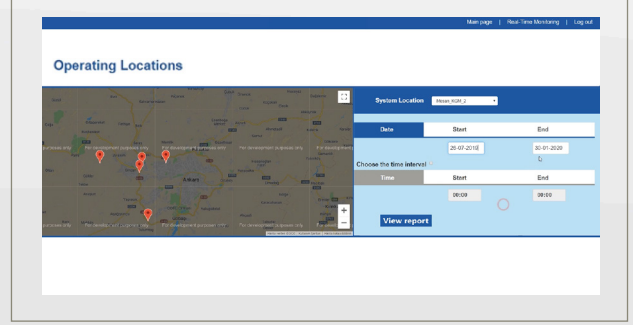


Mesan Medar TD provides remote monitoring of instant traffic flow as well as offering comprehensive data reports for desired location.

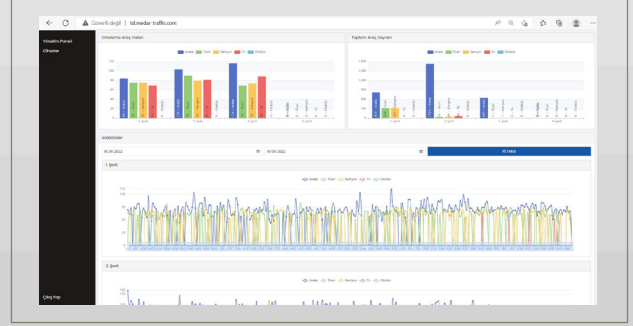
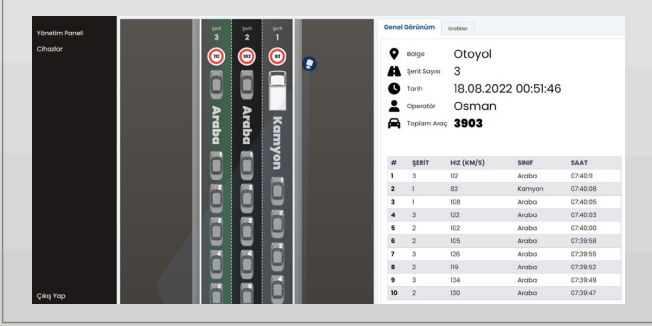
## Remote Access



## Comprehensive Reporting



## Instant Tracking



## MEDAR TD® Technical Specifications

- Multiple Vehicle Tracking:** Yes
- Speed Measurement Range:** 1-250 km/h
- Speed Accuracy:** < +/- 3km/h (up to 100 km/h); < +/- 3km/h (over 100 km/h)
- Lane Detection:** up to 4 lanes
- Vehicle Classification:** 4 type
- Storage:** 16 GB
- Remote Access:** GSM Modem
- Metadata:** Date, Time, GPS, Speed, Vehicle's Class, Vehicle's Lane
- Power:** 12V, Optional Solar Power, Optional 220 VAC
- Weight:** 13 kg
- Size:** 40 cm x 35 cm x 20 cm
- Operating Temperature:** -20°C to +60°C
- Environmental:** IP65
- Real-Time Monitoring/Reporting:** Compatible with Safari, Chrome, Edge, Firefox



All the technical data are subject to change by  $\pm 5\%$  without prior notice. Issued Date: 04/2023  
All rights reserved © 2023 MESAN Inc.